



# Developing Next Generation Programmed T Cell Therapies

January 2023



# Disclaimer

These slides contain forward-looking statements within the meaning of the "safe harbor" provisions of the Private Securities Litigation Reform Act of 1995. Forward-looking statements are statements that are not historical facts, and in some cases can be identified by terms such as "may," "will," "could," "expects," "plans," "anticipates," and "believes." These statements include, but are not limited to, statements regarding Autolus' development of the obe-cel program including the Company's belief of its unique clinical profile and differentiated product profile as well as hopeful adoption of obe-cel in additional clinical settings; the future clinical development, efficacy, safety and therapeutic potential of its product candidates, including progress, expectations as to the reporting of data, conduct and timing and potential future clinical activity and milestones; expectations regarding the initiation, design and reporting of data from clinical trials; expectations regarding regulatory approval process for any product candidates; the benefits of the collaboration between Autolus and Blackstone including the potential and timing to receive milestone payments and pay royalties under the terms of the strategic collaboration; the extension of the pipeline beyond obe-cel; the Company's belief of its ability to scale manufacturing and the Company's anticipated cash runway. Any forward-looking statements are based on management's current views and assumptions and involve risks and uncertainties that could cause actual results, performance, or events to differ materially from those expressed or implied in such statements. These risks and uncertainties include, but are not limited to, the risks that Autolus' preclinical or clinical programs do not advance or result in approved products on a timely or cost effective basis or at all; the results of early clinical trials are not always being predictive of future results; the cost, timing and results of clinical trials; that many product candidates do not become approved drugs on a timely or cost effective basis or at all; the ability to enroll patients in clinical trials; possible safety and efficacy concerns; and the impact of the ongoing COVID-19 pandemic on Autolus' business. For a discussion of other risks and uncertainties, and other important factors, any of which could cause Autolus' actual results to differ from those contained in the forward-looking statements, see the section titled "Risk Factors" in Autolus' Annual Report on Form 20-F filed with the Securities and Exchange Commission on March 10, 2022, as well as discussions of potential risks, uncertainties, and other important factors in Autolus' subsequent filings with the Securities and Exchange Commission. All information in this presentation is as of the date of the release, and Autolus undertakes no obligation to publicly update any forward-looking statement, whether as a result of new information, future events, or otherwise, except as required by law. You should, therefore, not rely on these forward-looking statements as representing the Company's views as of any date subsequent to the date of this presentation.

# Building a fully integrated CAR T company

Expanding excellence in R&D and manufacturing to commercialization



## Obe-cel met primary endpoint in pivotal study

- Lead product candidate obe-cel potentially best-in-class for relapsed/refractory adult acute lymphoblastic leukemia (ALL)
- Pivotal phase 2 trial in ALL met primary endpoint
- Attractive profile in B-NHL indications



## Pipeline

- Pipeline built on modular innovation targeting cancers with limited treatment options



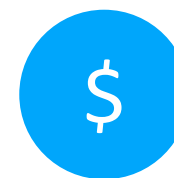
## Scalable manufacturing

- In house cell manufacturing for clinical trial supply
- Commercial fit-for-purpose cell manufacturing facility running through validation process
- Planned annual capacity of at least 2,000 batches to service global demand in ALL



## Collaboration

- Collaboration worth \$250 million with Blackstone Life Sciences, of which \$220M already received, to develop obe-cel in adult ALL
- Established technology collaborations with Moderna and BMS
- Opportunity for partnering of pipeline programs



## Strong cash position

- Blue chip investor base with recent fundraiser adding \$163M
- Year end cash position of \$382.7M
- Strong cash position to deliver on current strategy through approval of obe-cel



LEAD CLINICAL PROGRAM

# Obe-cel

A standalone, potentially best-in-class  
CD19 CAR T cell therapy candidate

# FELIX Phase 2 Study Overview

Interim analysis completed Q4 2022 – **met primary endpoint** – full study readout expected Mid 2023

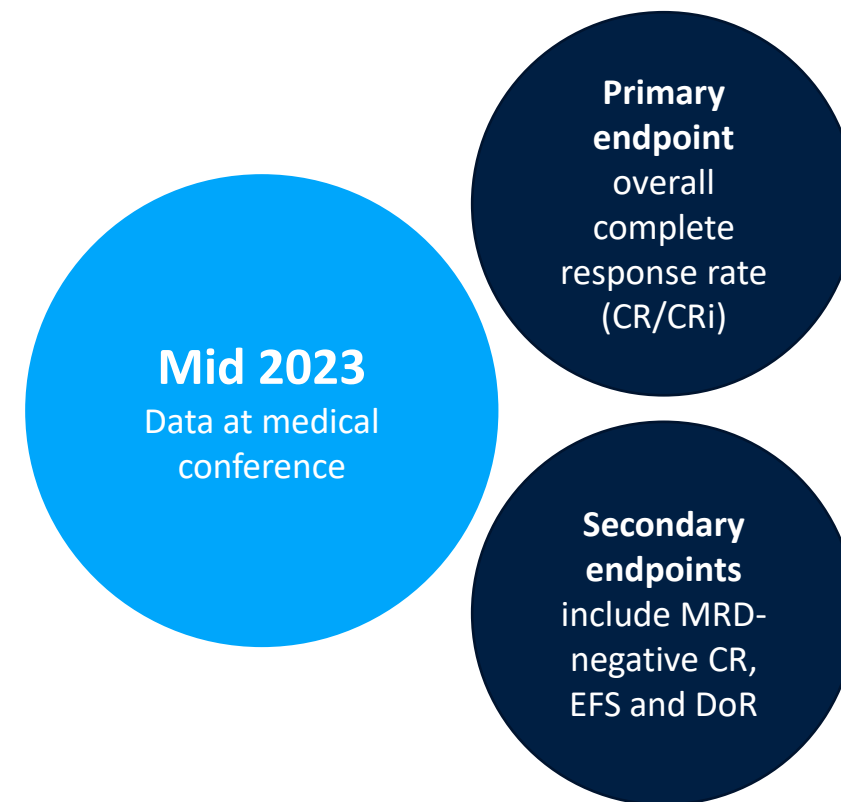


Pivotal phase 2 trial in relapsed / refractory (r/r) adult ALL patients (NCT04404660)

Phase 2 has up to 100 relapsed/refractory adult ALL patients with morphological disease:

- 34 sites in US, UK and Spain
- Phase 1b run-in study – completed
- Phase 2 study morphological cohort fully enrolled
- Phase 2 study interim analysis completed in Q4 2022 – primary end point reached
- Phase 2 study data presentation planned for Q2 2023

Patients with minimal residual disease (MRD) evaluated in separate study arm



# FELIX Phase 2 Pivotal trial met primary endpoint

Positive data is a catalyst for the next stage of growth and preparation for commercialization

- Phase 2 pivotal FELIX study of obe-cel in r/r adult ALL has met its primary endpoint, based on an interim analysis of 50 patients with morphological disease, as verified by an IDMC
- The primary endpoint for the FELIX Phase 2 trial is the ORR, defined as CR and CRi
- Obe-cel demonstrated ORR of 70% in interim analysis of 50 patients with r/r ALL
- Encouraging tolerability data observed, with 3%  $\geq$ Grade 3 Cytokine Release Syndrome (CRS) and 8%  $\geq$ Grade 3 Immune effector cell-associated neurotoxicity syndrome (ICANS) in 92 patients evaluable for safety
- Screening completed for patients for entry into the morphological cohort
- Blackstone paid a development milestone of \$35 million, earlier than anticipated, at this interim analysis

# Obe-cel is a potentially transformational therapy for adult ALL

Unique CAR T design to drive differentiated product profile

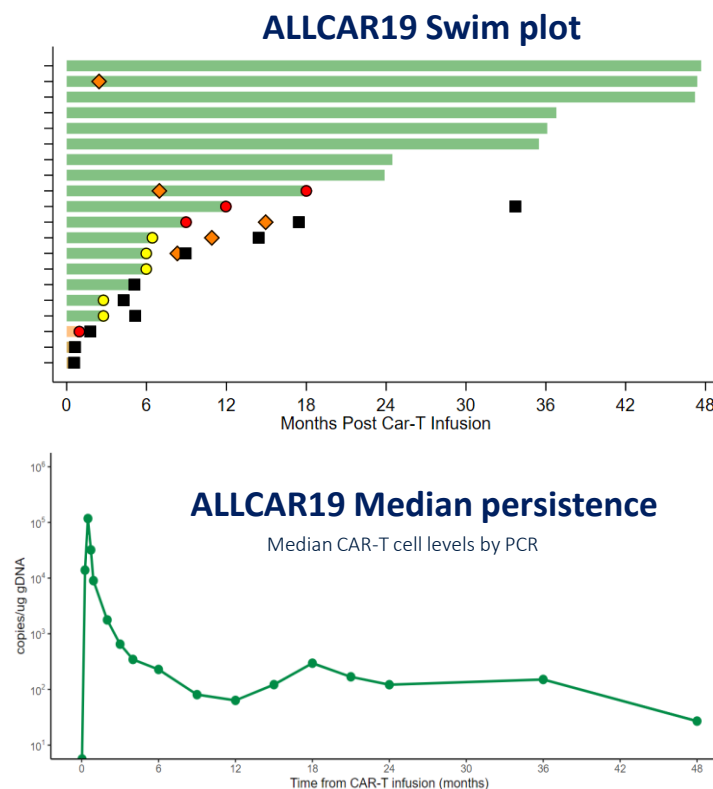
## Obe-cel – Key Properties

- Target engagement with fast off-rate drives unique product properties
- High Overall Remission Rate (ORR) across all patient populations evaluated<sup>1,2</sup>
- 35% of patients with long-term remission, without any further therapy<sup>2</sup>
- All patients with long term remissions have long-term persisting CAR T cells
- Well manageable safety profile<sup>2</sup>

### NOTES

1. FELIX study
2. ALLCAR19 study

## Obe-cel – Key Data



## Regulatory Designations

**Orphan Drug designation**  
by FDA for B-ALL

**Orphan Medicinal Product designation** by EMA in ALL

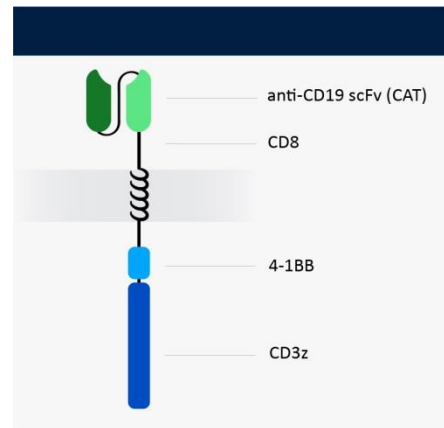
**RMAT designation**  
by FDA in R/R B-ALL

**Prime designation**  
by EMA in R/R B-ALL

**ILAP designation** by MHRA  
in Adult R/R B-ALL



# Obe-cel has a unique mechanism of action



CD19 binder with fast off-rate

## Potential for improved potency, reduced toxicity

Avoided over-activation of CAR T cells

-> Reduced toxicities

Increased CAR T peak expansion

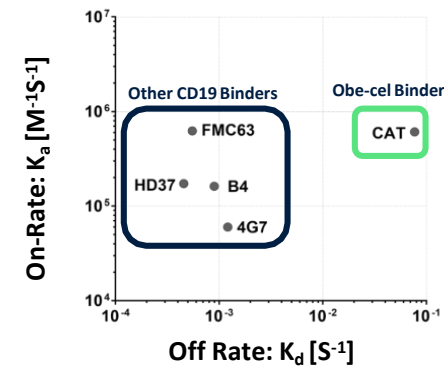
-> Improved persistence

Avoided exhaustion of CAR T cells

-> Improved engraftment

-> Improved persistence

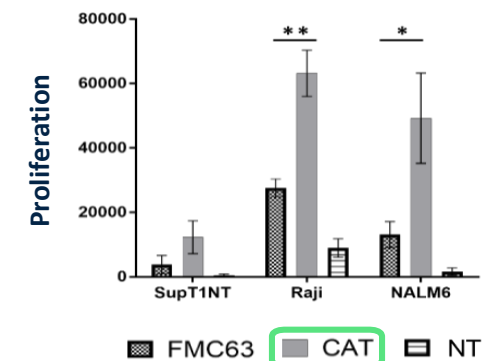
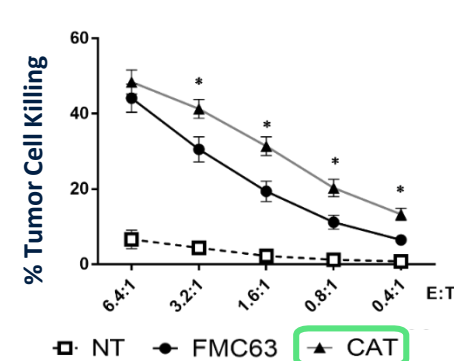
## Fast off-rate



Obe-cel has a shorter half-life of interaction compared to binders used in approved products

- obe-cel = 9.8 seconds
- Kymriah® = 21 minutes

## Enhanced cytotoxicity and proliferation





# Obe-cel showed consistent clinical profile across three clinical studies

Data from 3 studies - range of ages and patient conditions

Obe-cel demonstrated a favourable tolerability profile: no high-grade CRS and limited ICANS

	CARPALL #1 Peds ALL	ALLCAR19 #2 Adult ALL	FELIX P1b #3 Adult ALL	FELIX P2 Adult ALL
n	14	20	16	50 (92)*
ORR (CR & CRi) (95% CI)	86% (57%, 98%)	85% (62%, 97%)	75% (48%, 93%)	70%
CRS <sup>1</sup> ≥ Grade 3	0%	0%	0%	3%
CRS <sup>1</sup> any Grade	93%	55%	56%	ND
Neurotox <sup>2</sup> ≥ Grade 3	7%	15%	6%	8%
Neurotox <sup>2</sup> any Grade	50%	20%	13%	23%
Median Age	9	42	42	ND
Bone marrow blast >20% at LD	21%	60%	75%	ND
Bone marrow blast <5% at LD	71%	35%	25%	ND
Prior blinatumomab	7%	25%	56%	ND

<sup>1</sup> CRS grading based on Lee et al (2014) for CARPALL and ALLCAR19, and ASTCT grading (Lee et al 2019) for FELIX

<sup>2</sup> Neurotoxicity grading based on CTCAE v4.03 for CARPALL and ALLCAR19, and ASTCT ICANS grading (Lee et al 2019) for FELIX

\* Efficacy analysis for FELIX 2 trial conducted in 50 patients whereas safety analysis conducted in 92 patients

#1 Ghorashian et al. Nature Medicine 2019

#2 Roddie et al. J Clin Oncol, 2021

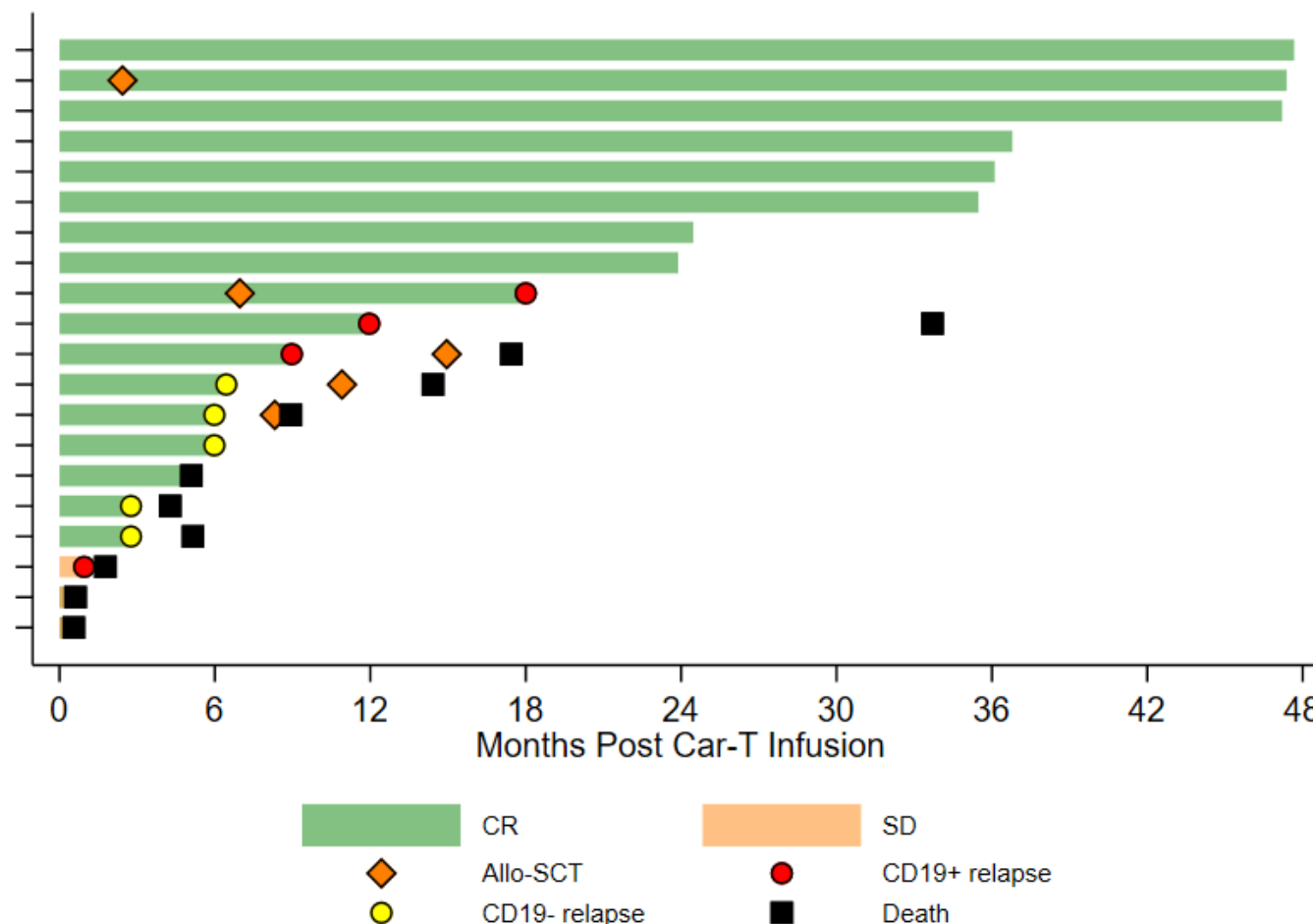
#3 Culshaw et al, ASH 2021, abstract #477

# Obe-cel at ASH 2022 – B-ALL long term follow up from Ph1 ALLCAR19 trial

‘Safety, Efficiency and Long-Term Follow-up of obe-cel, a Fast-Off Rate CD19 CAR in Relapsed/Refractory B-Cell Acute Lymphoblastic Leukaemia and Other B-Cell Malignancies’

## B-ALL patients

- Of the 20 infused B-ALL patients, 8/20 (40%) are in ongoing CR at a median FU of 36 months (IQR 24-47) post obe-cel
- 7/8 (35%) maintain remission without any further therapy (including TKI)
- All patients with long term remissions have long term persisting CAR T cells



# Unmet medical need in r/r adult ALL despite approved agents

Current standard of care and recently approved agents in r/r adult ALL<sup>1</sup>

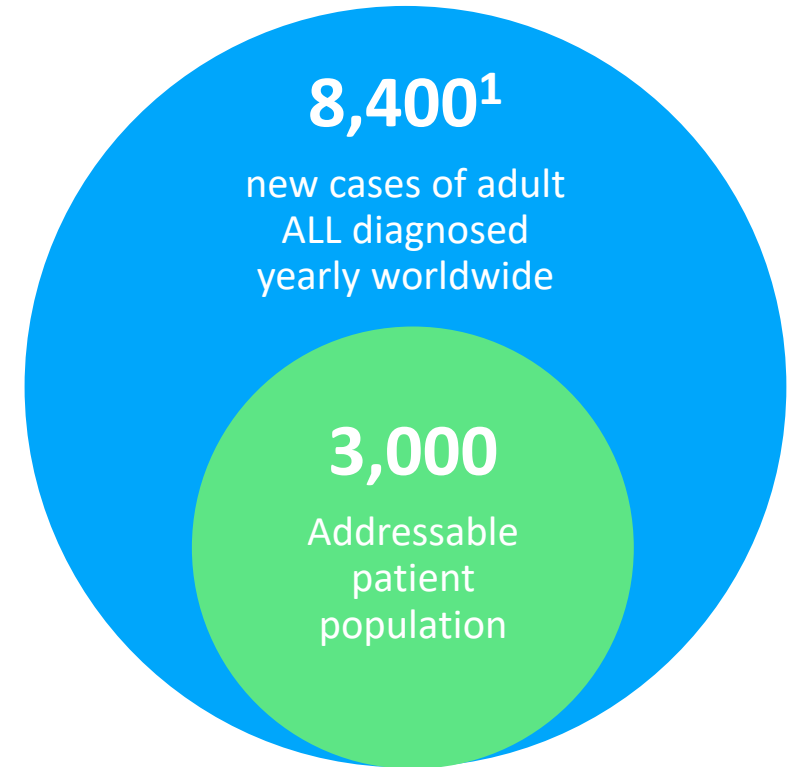
	STANDARD OF CARE		RECENTLY APPROVED
	Blincyto <sup>®2</sup> (blinatumomab)	Besponsa <sup>®3</sup> (inotuzumab ozogamicin)	Tecartus <sup>™4</sup> (brexucabtagene autoleucel)
N	271	109	54
ORR	44%	81%	65%
EFS/PFS	31% @ 6m ~10% @ 18m	~45% @ 6m ~20% @ 18m	~65% @ 6m ~25% @ 18m
median DoR	7.3m	4.6m	13.6m
median OS	7.7m	7.7m	18.2m
CRS ≥ Grade 3	5%	Not reported	26%
Neurotox any Grade	65%	Not reported	87%
Neurotox ≥ Grade 3	13%	Not reported	35%
Subsequent SCT post treatment	24%	41%	18%
Other notable observations	NA	14% Hepatic VoD	40% vasopressor use <sup>5</sup>

1. Data are not from head-to-head clinical testing and should not be viewed as comparative data  
2. Kantarjian et al., 2017/ USPI (product label) 3. Kantarjian et al., 2016/ USPI (product label) 4. Shah et al. Lancet 2021/ USPI (product label) 5. Shah et al. ASCO 2021  
The estimates of EFS/PFS are read from the KM curves. The efficacy data in ZUMA-3 evaluating brexucabtagene autoleucel are based on the modified ITT population while the blinatumomab and inotuzumab ozogamicin data are based on the ITT population

# Obe-cel for adult Acute Lymphoblastic Leukemia (ALL): high unmet need

Successful therapy requires high level of activity and sustained persistence paired with good tolerability

- Median overall survival is < 1 year in r/r adult ALL
- Combination chemotherapy enables 90% of adult ALL patients to experience Complete Response (CR)
  - Only 30% to 40% achieve long-term remission
- Current T cell therapies in for adult patients are Blincyto® and TecartusTM<sup>2</sup>
  - Both therapies are highly active, but frequently followed by subsequent treatments (e.g. alloSCT)
  - Blincyto®: favourable safety profile, few patients experiencing severe CRS and ICANS, but limitations on convenience - continuous i.v. infusion during 4 week treatment cycles
  - Tecartus™: more challenging to manage - induces elevated levels of severe CRS, a high level of ICANS, and requires vasopressors for many patients
- Opportunity to expand the addressable patient population in earlier lines of therapy



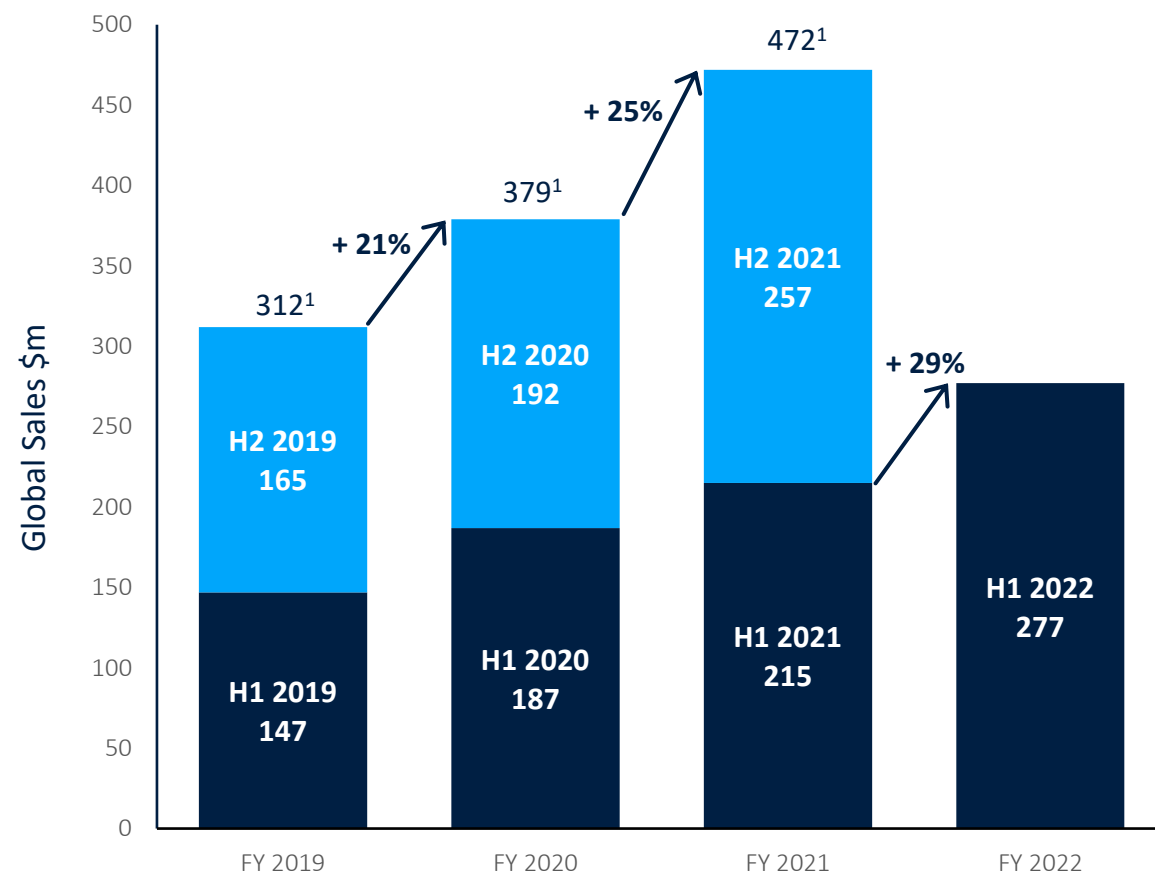
## NOTES

1. SEER and EUCAN estimates (respectively) for US and EU
2. Currently approved in US only

# Obe-cel could launch into an expanding ALL market if approved

Blincyto®, current market leader, shows annual revenue growth of c.25%

## Reported Blincyto® sales<sup>1</sup>



- Blincyto® sales price estimated to be \$207k<sup>2</sup> (for 2 cycles) supporting approx. >2,000 commercial adult ALL patients, growing at a rate of 25%
- Kymriah® is priced at \$508k in pediatric ALL. Breyanzi® is priced at \$447k in DLBCL<sup>3</sup>. Tecartus™ is priced at \$424k<sup>4</sup> for adult ALL
- Breyanzi® and other CAR T cell therapies are expanding delivery center footprint
- Tecartus™ is expected to establish CAR T use in adult ALL
- If approved obe-cel has the potential to be best-in-class curative therapy and expanding use beyond academic transplant centers

### NOTES

1. As per Amgen quarterly SEC filings
2. <https://www.cms.gov/medicare/medicare-part-b-drug-average-sales-price/2022-asg-drug-pricing-files>
3. Bristol Myers finally wins FDA approval for cancer cell therapy | BioPharma Dive – Komodo Health 2015 – 2020
4. Red Book pricing database <https://www.ibm.com/products/micromedex-red-book/pricing>

# Obe-cel next steps to commercialization

## Data and path to approval

- FELIX – clinical data presentation planned for Q2 2023
- Filing of Biologics License Application (BLA) to U.S. Food and Drug Administration (FDA) planned for end of 2023
- Filings of EU and UK marketing authorization applications planned for 1H 2024

## Manufacturing

- Bespoke commercial manufacturing facility built in Stevenage UK
- Operational start up in 1H 2023 (qualification and validation)
- GMP license from MHRA planned for Q3 2023
- Facility has initial capacity to produce up to 2000 batches PA; sufficient for global demand in ALL

## Commercialization

- Focus in 2023 on Medical affairs, HTA dossier compilation and center onboarding
- Focus in 2024 on launch preparation and execution
- Consider EU partner for launch



# Building the obe-cel opportunity

Deep value program with potentially broad applicability



# Obe-cel lifecycle outlook - NHL/CLL and Pediatric ALL - ASH 2022

High level of clinical activity with well manageable safety profile

- Clinical data supports differentiated product profile in Adult ALL, B-NHL (obe-cel) and Pediatric ALL (AUTO 1/22)
- Potential to drive adoption of obe-cel across B-cell malignancies

ALLCAR19 – B-NHL and CLL

N	25
ORR	
All patients	92%
Follicular Lymphoma	100%
Mantle Cell Lymphoma	100%
DLBCL	88%
CLL/SLL	80%
CRS $\geq$ Grade 3	0%
CRS any grade	56%
Neurotox/ICANS $\geq$ Grade 3	0%
Neurotox/ICANS any Grade	4%

- Median Follow-Up time from infusion in NHL/CLL cohort: 12.9 months (IQR 7.4-18.0)
- High ORR, with long term persistence driving durable outcomes
- Favourable safety profile with low ICANS and no high grade CRS

CARPALL (AUTO1/22 cohort (n=12))

Molecular MRD neg CR/Cri by d30	10 (83%)
Disease progression	2
Relapse	
Antigen negative relapse	0
Emergence of molecular MRD	3
CD19+/CD22+ relapse	2
CRS $\geq$ Grade 3	0
Neurotox/ ICANS $\geq$ Grade 3	1 (8%)

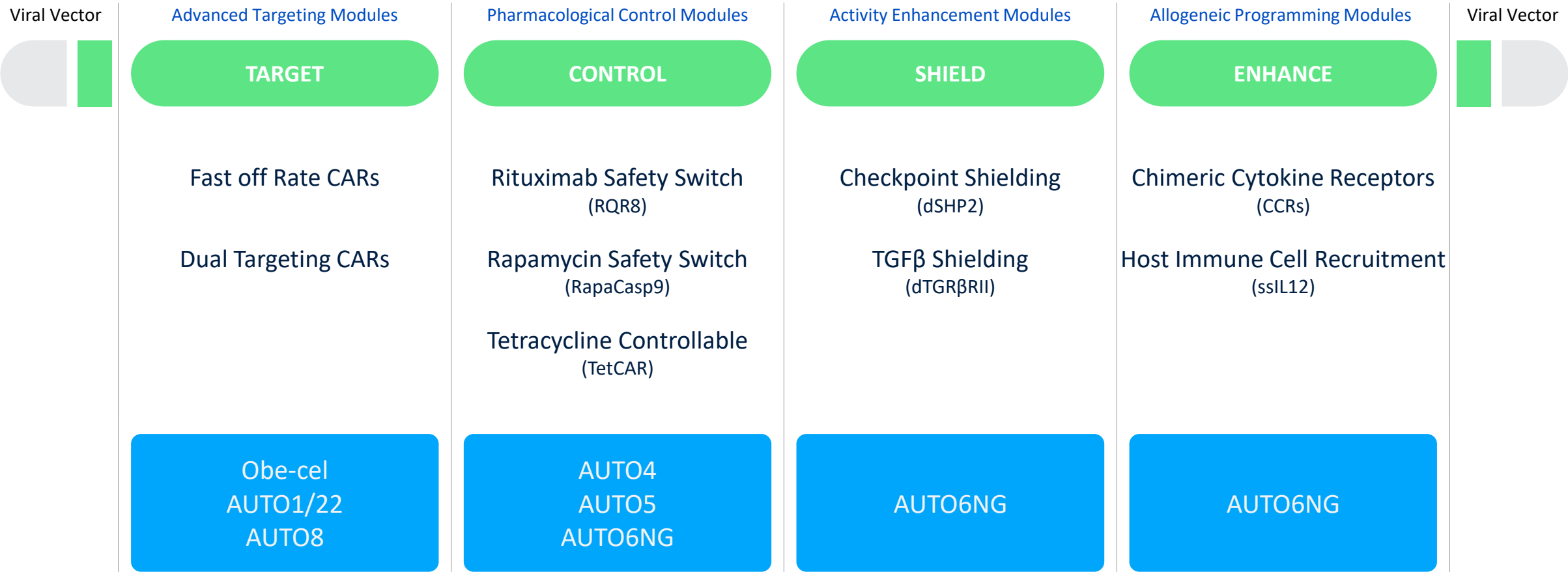
- Patient population ineligible for commercial CAR T therapy
  - Including patients with CD19-ve disease and patients with isolated extramedullary disease
- Est. molecular CR rate for obe-cel in this patient group approx. 40%
- 1 year EFS 60% despite the high-risk patient cohort
- No antigen-ve relapse seen in responding patients
- At median FU 8.7 months, 5 of 10 responding patients were in MRD-ve CR (4-12 months)

# Pipeline

A broad portfolio of potential next generation modular T cell therapies

# A broad toolkit which is core to our strategy of modular innovation


## Advanced T cell programming



# Early-stage pipeline

Leveraging academic collaborations to generate opportunity for non-dilutive funding opportunities

PRODUCT	INDICATION	TARGET	STUDY NAME	PHASE
AUTO4	TRBC1+ Peripheral TCL	TRBC1	LibrA T1	Phase 1
AUTO5	TRBC2+ Peripheral TCL	TRBC2		Preclinical
AUTO6NG	Neuroblastoma; Other tumor types	GD2		Preclinical
AUTO8	Multiple Myeloma	BCMA & CD19	MCARTY*	Phase 1

 T-Cell Lymphoma

 Solid Tumors

 Multiple Myeloma

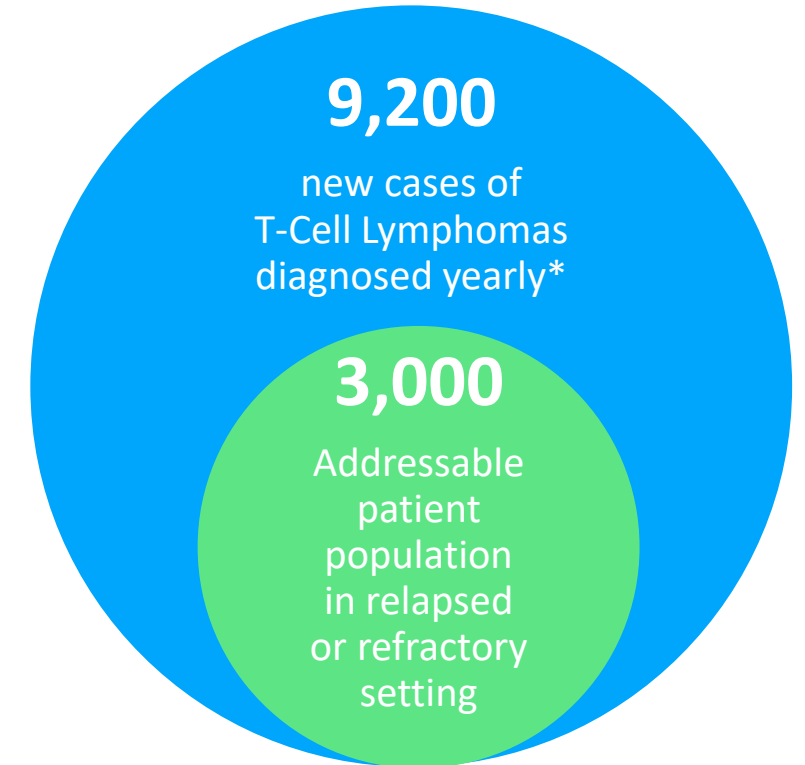
\* Collaboration with UCL

Next data readouts expected in 2023/2024

# AUTO4 and AUTO5 for Peripheral T-Cell Lymphoma

T-Cell Lymphoma is an aggressive disease with a very poor prognosis

- A large portion of T-Cell Lymphoma patients are refractory/relapse following first-line treatment (68%)<sup>1</sup>
- Standard of care is variable and often based on high-dose chemotherapy and stem cell transplants:
  - Median 5 yrs OS: 32%<sup>2</sup>
- Relapsed/refractory patients have a worse prognosis
  - Median PFS approximately 3 months/ Median OS < 6 months<sup>1,3</sup>
- Brentuximab survival benefit restricted to CD30 positive ALCL subtype<sup>4</sup>
  - approx. 12% of total PTCL patient population<sup>4,5</sup>
- T cell lymphoma has not benefited from advances in immunotherapy
  - Pan T-cell depletion highly toxic; few/no tumor-specific antigen targets

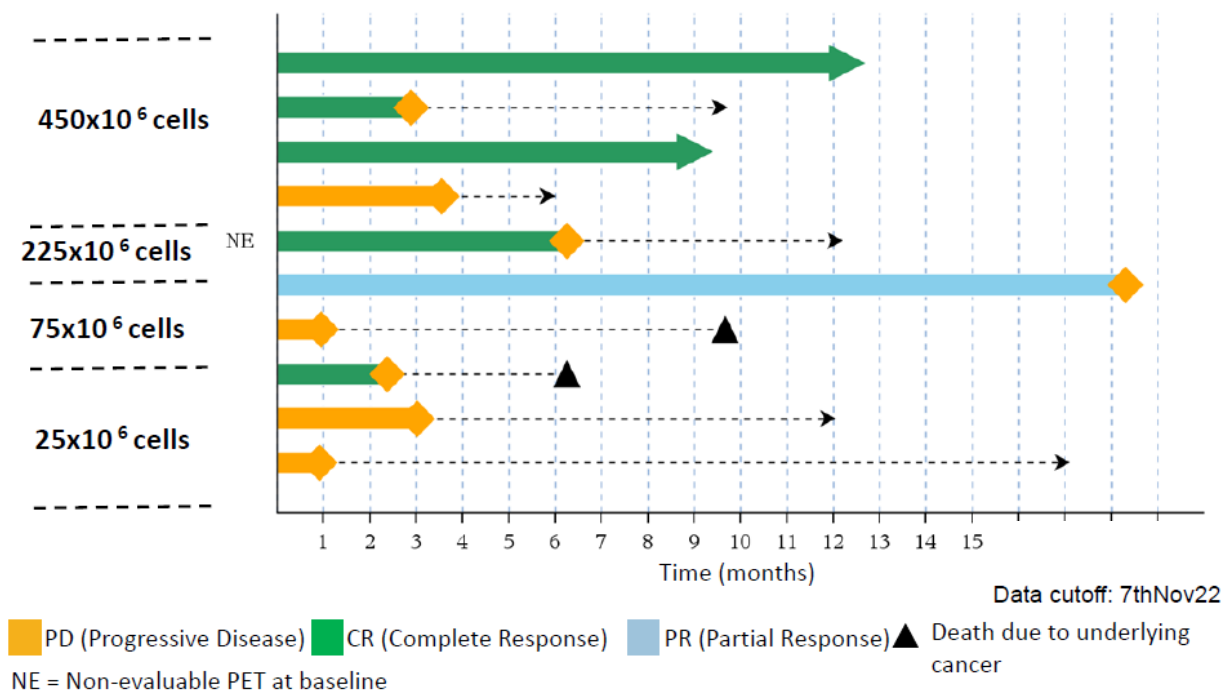


\*Japan, US and EU5 (2020 DRG Epidemiology Data)

# AUTO4 for Peripheral T-Cell Lymphoma: ASH 2022

Patients achieve durable metabolic complete responses

- AUTO4 treatment was well tolerated with no dose-limiting toxicities
- Ongoing responses at 9 and 12 months post-dosing at the highest dose tested ( $450 \times 10^6$ ) are encouraging
- No CAR T cell expansion was seen in peripheral blood but CAR T cells were detected in an on-treatment lymph node biopsy
- The study is ongoing, with additional patients due to be treated to define the recommended phase 2 dose



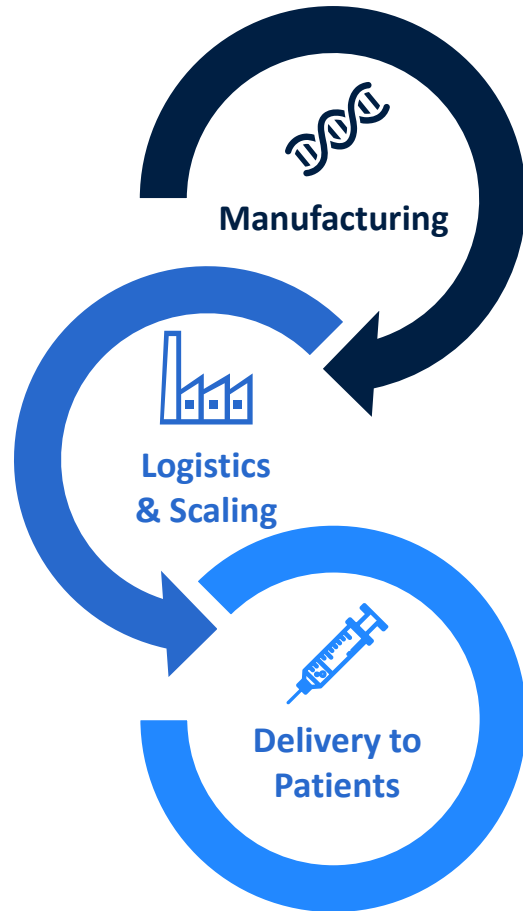
The background is a solid dark blue color. On the left side, there is a large, bright blue circle that overlaps the edge of the frame. On the right side, there is a smaller, dark blue circle that also overlaps the edge of the frame.

Manufacturing

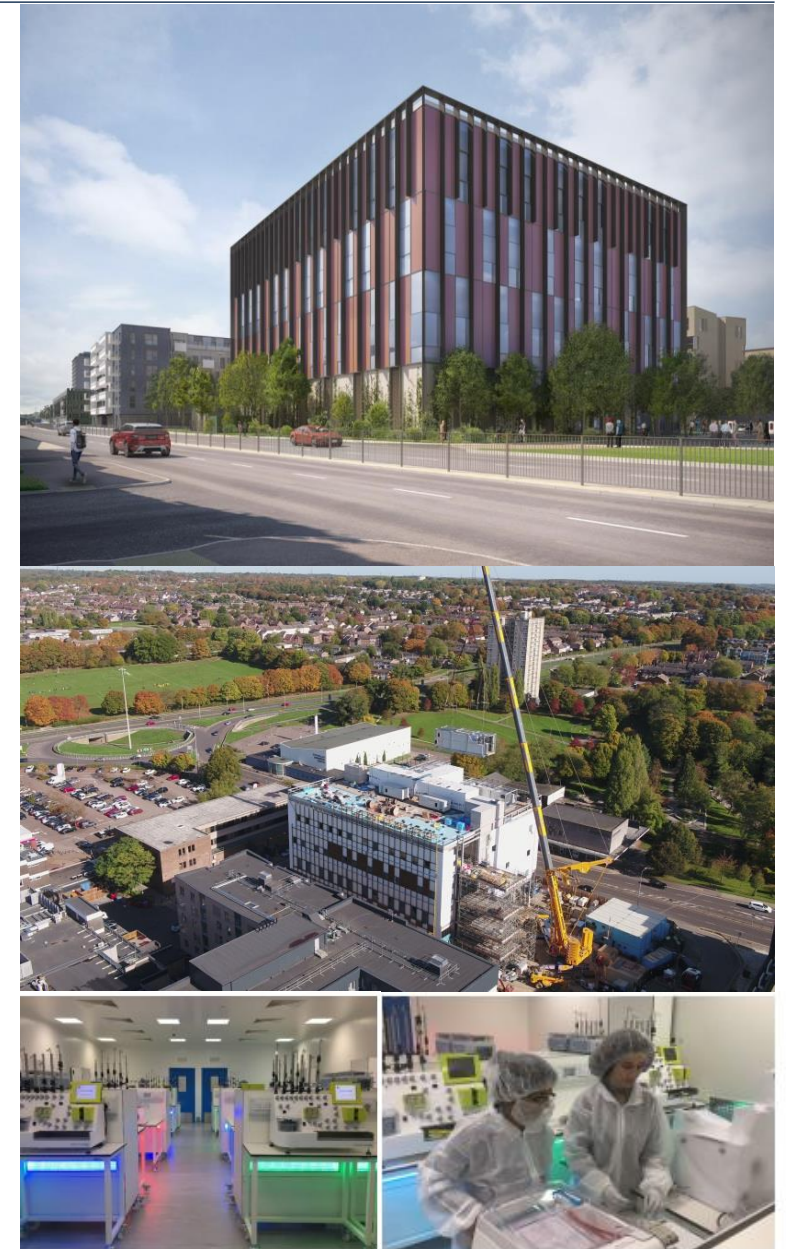


# Commercial manufacturing facility on track

Building a fully integrated manufacturing and logistics platform



- Phase 1 of build project completed in Q4 2022 – handover of first clean rooms to Autolus on Nov 25, 2022
- Equipment installations and qualification by Autolus on track for Good Manufacturing Practice (GMP) operations by H2 2023
- Tried and tested manufacturing process within an established regulatory framework
- Planned annual capacity of at least 2,000 batches to service global demand in ALL
- CMC package for submission to FDA progressing per plan



The background is a solid dark blue color. On the left side, there is a large, lighter blue circle that overlaps the edge of the frame. In the top right corner, there is a smaller, darker blue circle that also overlaps the edge of the frame.

Strong cash position with key  
financing partner

# Strong cash position to deliver on current strategy through to approval/early 2025

The infographic is divided into two main sections by a vertical line. The left section features a large dark blue circle containing the text '\$382.7m' and 'Cash at Dec 31, 2022 (unaudited)'. Below this is a light gray box titled 'Autolus is funded into 2025' containing a bulleted list of regulatory milestones. The right section is titled 'Q4 2022 Cash inflows' and contains three light blue circles: '\$163.9m December public offering', '\$19.3m R&D tax credits from HMRC', and '\$70m Obe-cel program progress triggered \$70M in milestones'. To the right of the bottom circle is a light gray box titled 'Blackstone collaboration' containing a bulleted list of funding details.

**\$382.7m**

Cash at Dec 31, 2022  
(unaudited)

## Autolus is funded into 2025

- *BLA filing with FDA end of 2023*
- *MAA filings with EMA and MHRA in 1H 2024*
- *Expected initial approvals in 2024/2025*

## Q4 2022 Cash inflows

**\$163.9m**

December public  
offering

**\$19.3m**

R&D tax credits  
from HMRC

**\$70m**

Obe-cel program  
progress triggered  
\$70M in milestones

## Blackstone collaboration

- *\$100m in equity 2021*
- *\$120m of \$150m in project financing*
- *\$30m milestone remaining*

# Summary

# Autolus planned news flow

## Obe-cel

- FELIX - phase 2 clinical data presentation planned for Q2 2023
- Biologics License Application (BLA) to U.S. Food and Drug Administration (FDA) by end of 2023
- Longer term follow up data planned for ASH 2023 and medical conferences in 1H 2024

## Pipeline

- Updates on AUTO1/22 and AUTO 4 planned for 2023
- Multiple academic clinical studies ongoing expected to generate additional news flow in 2023/2024
- Opportunity for news flow related to collaborations and technology licensing

## Manufacturing

- Qualification of Nucleus facility in H1 2023
- Commencement of GMP operations in H2 2023

# The Autolus opportunity

Building a fully integrated CAR T company - Expanding excellence in R&D and manufacturing to commercialization

- Obe-cel, a potentially best in class product candidate, met primary endpoint of ORR in adult patients with r/r ALL
  - Planned BLA filing end of 2023
  - Additional opportunity for obe-cel in B-NHL indications
  - Highly valuable pipeline with potential broad applicability in cancers with limited treatment options
- Purpose-built commercial manufacturing facility ready for qualification and validation activities in 1H 2023 with an initial capacity of up to 2000 batches per year, sufficient to serve global demand in ALL
  - Validating collaborations with leading pharma and biotech companies - BMS and Moderna
  - Strong cash position with \$382.7 million (Dec 31<sup>st</sup> 2022)

# Autolus

[autolus.com](https://autolus.com)

